

## **Placement, study abroad and ERASMUS**

In AY14/15, there were changes to **fee packages\*** available to students who are:

- Full Year ERASMUS and Part year ERASMUS student (who are spending fewer than 10 weeks at their home HEI)
- Full year Studying Overseas (who are spending fewer than 10 weeks at their home HEI)
- Full year Placement (Sandwich) course (who are spending fewer than 10 weeks at their home HEI)

**\*NOTE:** the maintenance funding available to these students remained unchanged.

**\*NOTE:** Part year ERASMUS now means ERASMUS year

These changes only apply to new and continuing students under the 2012 Cohort (commenced their study on or after 1<sup>st</sup> September 2012). Variable, 2008 and 2009 cohort students will retain their eligibility to the previous package of support

### **Full year work Placement funding (Sandwich course)**

In 2013/14 and prior all 2012 cohort students, who were on a work placement year as part of their course in either in the UK or overseas (not ERASMUS) were liable for 50% of their tuition fees for the year on placement.

From AY14/15, new and continuing 2012 Cohort students who are on a placement year, either in the UK or abroad will be liable for up to £1,800 tuition fees for the placement Year. The student will be able to take out a tuition fee loan to meet the cost of this. If the student is on a work placement year abroad ([placement flowchart](#)) as part of the ERASMUS scheme please see below for ERASMUS funding.

### **Full year Study abroad funding**

In 2013/14 and prior, 2012 cohort students who studied abroad as part of their course but not as part of the ERASMUS scheme were liable for 50% of the tuition fees for the year abroad.

From AY14/15, new and continuing 2012 Cohort students who are studying abroad as part of their course but are not part of the ERASMUS scheme will be liable for up to £1,350 tuition fees for the year abroad. For example, a student who is studying at an HEI with an Access Agreement in England and is studying abroad ([study abroad flowchart](#)) but not as part of the ERASMUS scheme will be liable for £1,350 in Tuition Fees. The student will be able to take out a tuition fee loan to meet the cost of this.

Placement, Study Abroad or Erasmus	2012 COHORT	2009 & earlier COHORTS	What rate of maintenance loan will be awarded?	Can student receive means tested support?	Can student apply for GFD's?	Can student apply for travel grant?	Do SFE require evidence?
Full year unpaid type A*	Click <a href="#">here</a>	£1725	Reduced Rate	No	No	No	No
Part year unpaid type A 10 weeks or more at HEI	£9000	£3465	Elsewhere/parental	Yes	Yes	No	No
Part year unpaid type A fewer than 10 weeks at HEI	Click <a href="#">here</a>	£1725	Reduced Rate	No	No	No	No
Full year unpaid type B**	Click <a href="#">here</a>	£1725	Elsewhere/parental	Yes	Yes	No	Yes
Part year unpaid type B 10 weeks or more at HEI	£9000	£3465	Elsewhere/parental/abroad	Yes	Yes	No – unless Medicine course or qualifying research abroad	Yes
Part year unpaid type B less than 10 weeks at HEI	Click <a href="#">here</a>	£1725	Elsewhere/parental/abroad	Yes	Yes	No – unless Medicine course or qualifying research abroad	Yes
Full year paid placement type C	Click <a href="#">here</a>	£1725	Reduced Rate	No	No	No	No
Part year paid placement 10 weeks or more at HEI type C	£9000	£3465	Elsewhere/parental	Yes	Yes	No	No
Part year paid placement fewer than 10 weeks at HEI type C	Click <a href="#">here</a>	£1725	Reduced Rate	No	No	No	No
ERASMUS full year	Click <a href="#">here</a> for fees	£0	Abroad Rate	Yes	Yes	Yes	No - unless apply for travel grant
ERASMUS part year fewer than 10 weeks at home HEI	Click <a href="#">here</a> for fees	£1725	Funding will depend on if the student is on placement, placement at a HEI or studying abroad please use the <a href="#">flowcharts</a> to determine funding.				
ERASMUS part year 10 weeks or more at home HEI	£9000	£3465					
Full year study abroad (Includes those on a placement at an overseas HEI)	Click <a href="#">here</a> for fees	£1725	Abroad rate	Yes	Yes	Yes	No - unless apply for travel grant
Part year study abroad fewer than 10 week at home HEI	Click <a href="#">here</a>	£1725	Abroad rate (if the student is at the overseas HEI for at least 50% of term).	Yes	Yes	Yes	No - unless apply for travel grant
Part year study abroad 10 weeks or more at home HEI	£9000	£3465	Abroad rate	Yes	Yes	Yes	No - unless apply for travel grant
Medicine clinical placements	£9000	£3465	Elsewhere/parental	Yes	Yes	Yes	No
Social work placements	£9000	£3465	Elsewhere/parental	Yes	Yes	No	No

## **Work Placements (Sandwich Course)**

The amount of support available to the student depends on their situation and the type of placement they will be undergoing.

There are 3 different types of work placement:

- (A) **Unpaid** work placement anywhere not covered in (B)
- (B) **Unpaid** work placement in one of the following:

### **New List from 14/15 Onwards**

- 1) A hospital, Public Health Service Laboratory or with Clinical Commissioning group
- 2) A Special Health Authority, the National Health Service Commissioning Board, the National Institute for Health and Care Excellence, the Health and Social Care Information Centre, Local Health Board, Health Board, Special Health Board or Health and Social Services Board
- 3) A Local Authority carrying out its duties relating to health, welfare or caring for children and young people, a voluntary organisation providing facilities or carrying out similar activities; A Local Authority acting in the exercise of public health functions
- 4) The prison or probation sector or after-care services;
- 5) Unpaid research in a UK or overseas institution
- 6) An unpaid placement in the Houses of Parliament

- (C) **Paid** work placement in the UK/Overseas.

Consideration also needs to be given to how long the placement lasts as students can attend part year placements:

- If a student is at their HEI for 10 weeks or more, they will usually be entitled to full support
- If a student is at their HEI for less than 10 weeks they will usually be charged lower fees and receive reduced rate ML

Please be aware that due to a change to the Health and Social Care laws that came into effect in April 2013, the list of *Unpaid Type B Placement* locations was updated. Please see above for the new list of locations from 2014/15 academic year onwards.

**Please note: where a student has indicated they will be attending an Unpaid Type B Placement and is on a Social Work degree the application can be processed under the Unpaid Type B category without requesting evidence of placement.**

## **Evidence Requirement**

A letter from the HEI to confirm details of a placement is **only required in the following cases:**

- Unpaid type B placements (as higher funding is available)
- Any uncertain periods abroad/placement
- Students wishing to apply for travel grant

**NOTE:** We only require evidence for type B unpaid placements as students on these courses can receive full support.

## **Additional placement type for 15/16**

Students studying courses who undertake positions as **unpaid researchers on placement in the House of Commons** should be treated as being on a research year and can be MT for Maintenance Grant and the full London rate of Maintenance Loan regardless of the HEI that they are studying with.

### **Full year ERASMUS funding**

In the 2013/14 AY and prior, a tuition waiver/concession was available for students in England who go abroad to study and/or spend time on a work placement on the ERASMUS scheme for a full academic year. Students who spend a full academic year abroad under the scheme are not charged for tuition by their institution and we would therefore enter their tuition fee as 0 in section 4.

- Part Year ERASMUS students in 2013/14 and prior (with fewer than 10 weeks spent at “Home” HEI) were eligible for 50% tuition fee support.
- Part Year ERASMUS students in 2013/14 and prior (with 10 or more weeks spent at “Home” HEI) were eligible for 100% tuition fee support

From 2014/15 new and continuing 2012 Cohort students who are either doing a Full Year ERASMUS or a part year ERASMUS (with fewer than 10 weeks spent at “Home” HEI) will be liable for up to £1,350 in tuition fees. For example, a student who is studying at an HEI with an Access Agreement in England and is on an ERASMUS year will be liable for £1,350 in tuition fees. The student will be able to take out a tuition fee loan to meet the cost of this.

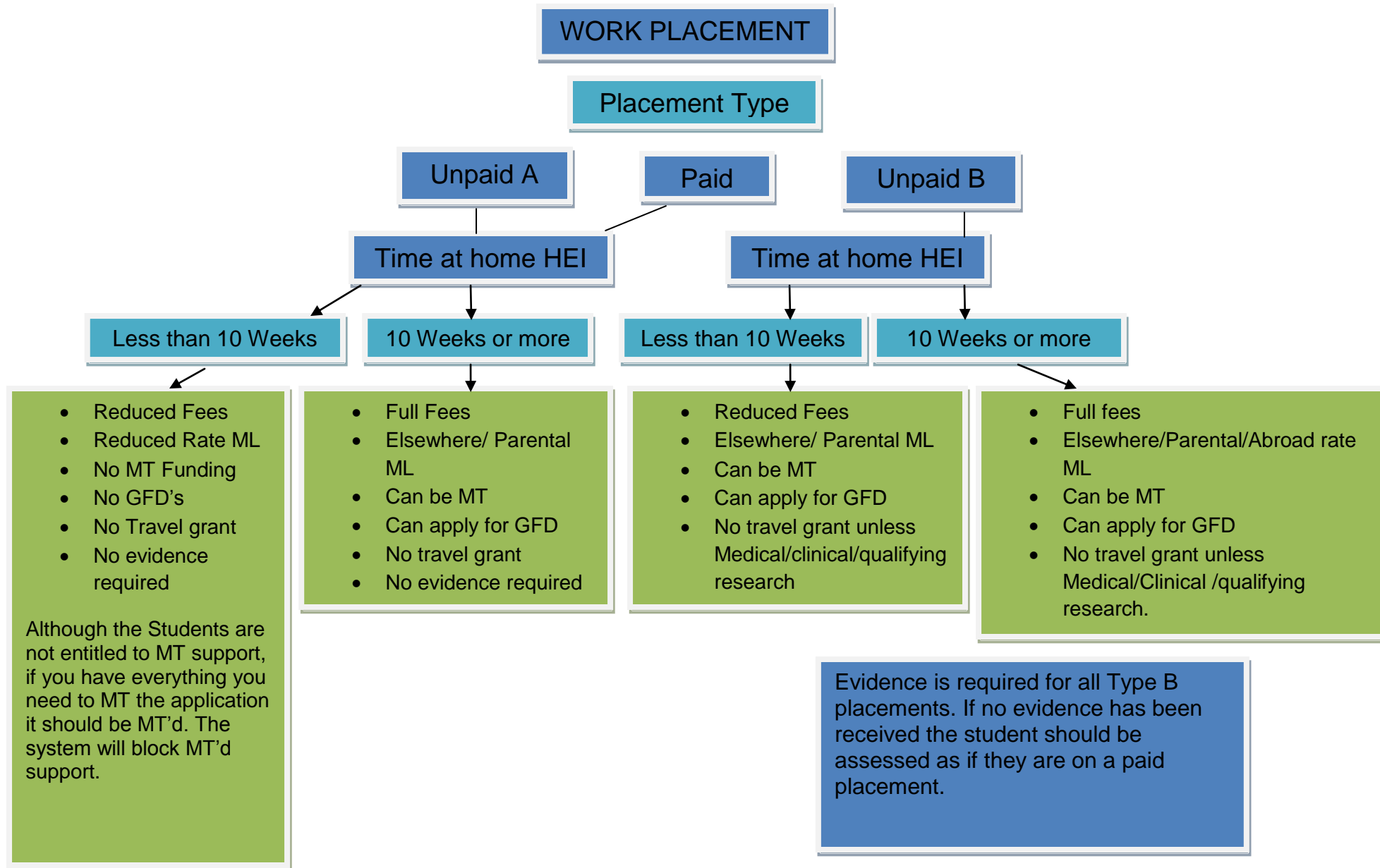
(For new and continuing 2012 cohort students who are doing a part year ERASMUS with more than 10 weeks spent at “Home” HEI, they will be liable for 100% of the cost of the tuition fees and can take out a tuition fee loan for the cost of this. This has not changed).

Please refer to the below table when determining the correct fees to award a 2012 cohort student studying one of the below:

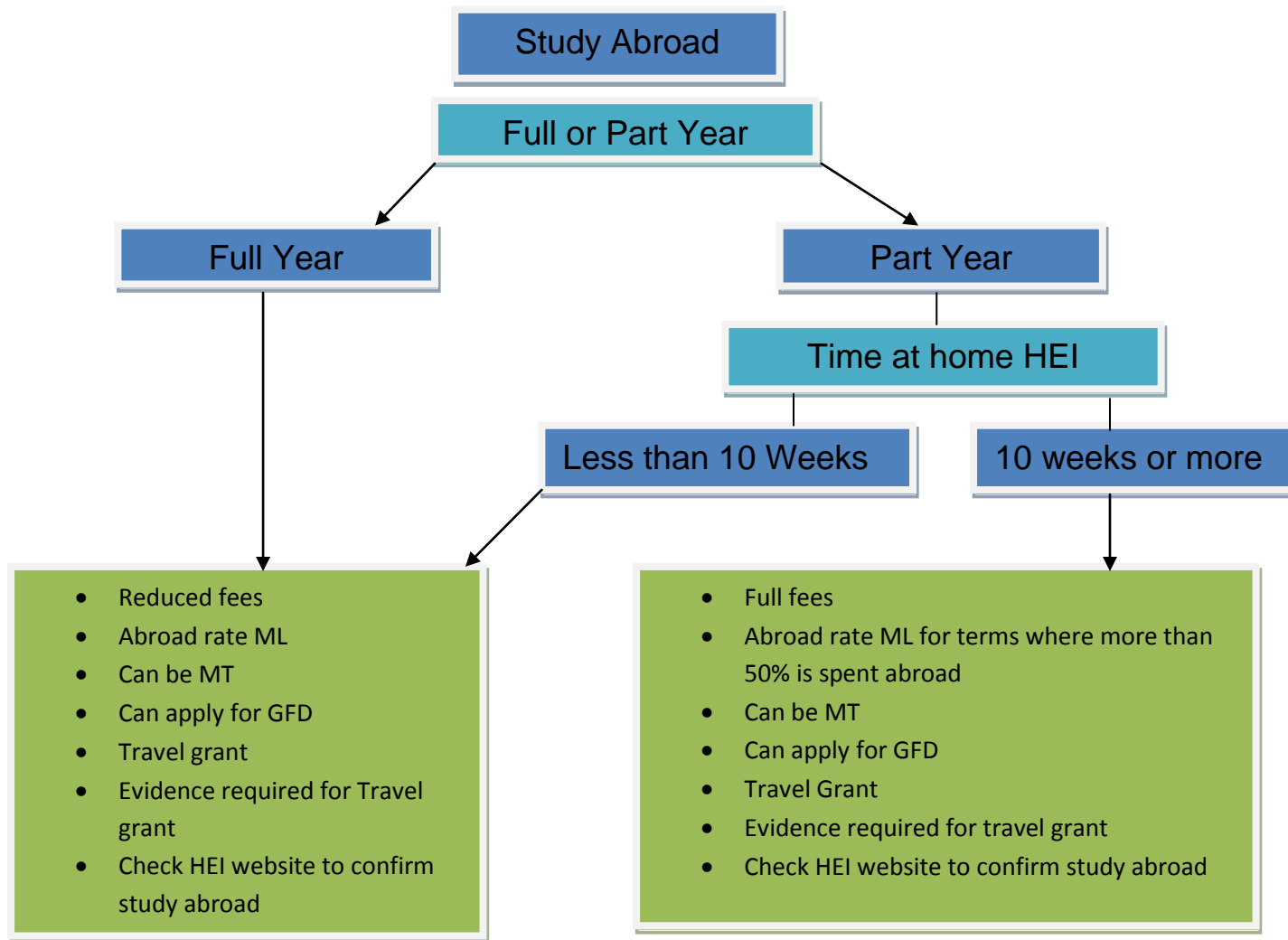
<b><u>2012 Cohort Reduced tuition fees full year and fewer than 10 weeks at home HEI</u></b>										
<b>Study type</b>		<b>ERASMUS study or work placement</b>			<b>Overseas study</b>			<b>Work placement as part of a sandwich course</b>		
<b>HEI type</b>		<b>Public</b>		<b>Private</b>	<b>Public</b>		<b>Private</b>	<b>Public</b>		<b>Private</b>
<b>Access agreement or equivalent</b>		Yes	No	N/A	Yes	No	N/A	Yes	No	N/A
<b>Student Domicile</b>	<b>HEI Location</b>									
England	England	£1,350	£900	N/A*	£1,350	£900	£900	£1,800	£1,200	£1,200
	Wales	£1,350	£600	N/A*	£1,350	£600	£900	£1,800	£800	£1,200
	Scotland	£0	£0	N/A*	£4,500	£4,500	£3,000	£4,500	£4,500	£3,000
	Northern Ireland	£0	£0	N/A*	£4,500	£4,500	£3,000	£4,500	£4,500	£3,000

\*Can't do ERASMUS at a Private HEI

Work Placement Flowchart (NON ERASMUS)



# Study Abroad Flowchart (NON ERASMUS)



## ERASMUS

ERASMUS is a European funded mobility scheme which allows for students to take part in an exchange scheme between different HEI's in Europe.

- Students who are on the Erasmus scheme for the full year do not have to pay tuition fees if they are an old system, variable, 2008 or 2009 cohort but **are liable for up to £1350 fees if they are a 2012 cohort student.**
- Erasmus year students are entitled to abroad rate maintenance loan
- Part-year Erasmus (less than 10 weeks at HEI) students may still pay fees, and can therefore apply for fees of up to £1350/£9000 for 2012 cohort students or £1725/£3465 for 2009 cohort students through SFE.
- Erasmus placements can from 3 months to a full AY.
- Students are not eligible for Erasmus study in the 1<sup>st</sup> year of their course; however they are eligible for Erasmus work placements in any year of their course.
- Erasmus students can apply for Travel Grant- we will need evidence from their HEI confirming their Erasmus details.
- **Students on full year Erasmus placements or part year ERASMUS for 2012 cohort students from 14/15 are entitled to full MT maintenance support even if they are paid for their placement.**
- **Students on full year Erasmus placements or part year ERASMUS for 2012 cohort students from 14/15 are entitled to the full abroad rate of maintenance loan rather than the reduced rate applied to standard placements.**
- **Students spending 10 weeks or more at their Home HEI and less than 30 weeks on their ERASMUS work placement are entitled to 'elsewhere' rate maintenance loan for their time spent on the ERASMUS placement because they do not meet the definition of "Erasmus year" (refer to ERASMUS 2012 Cohort Table).**

### **Students who study a full year abroad but only part year as ERASMUS.**

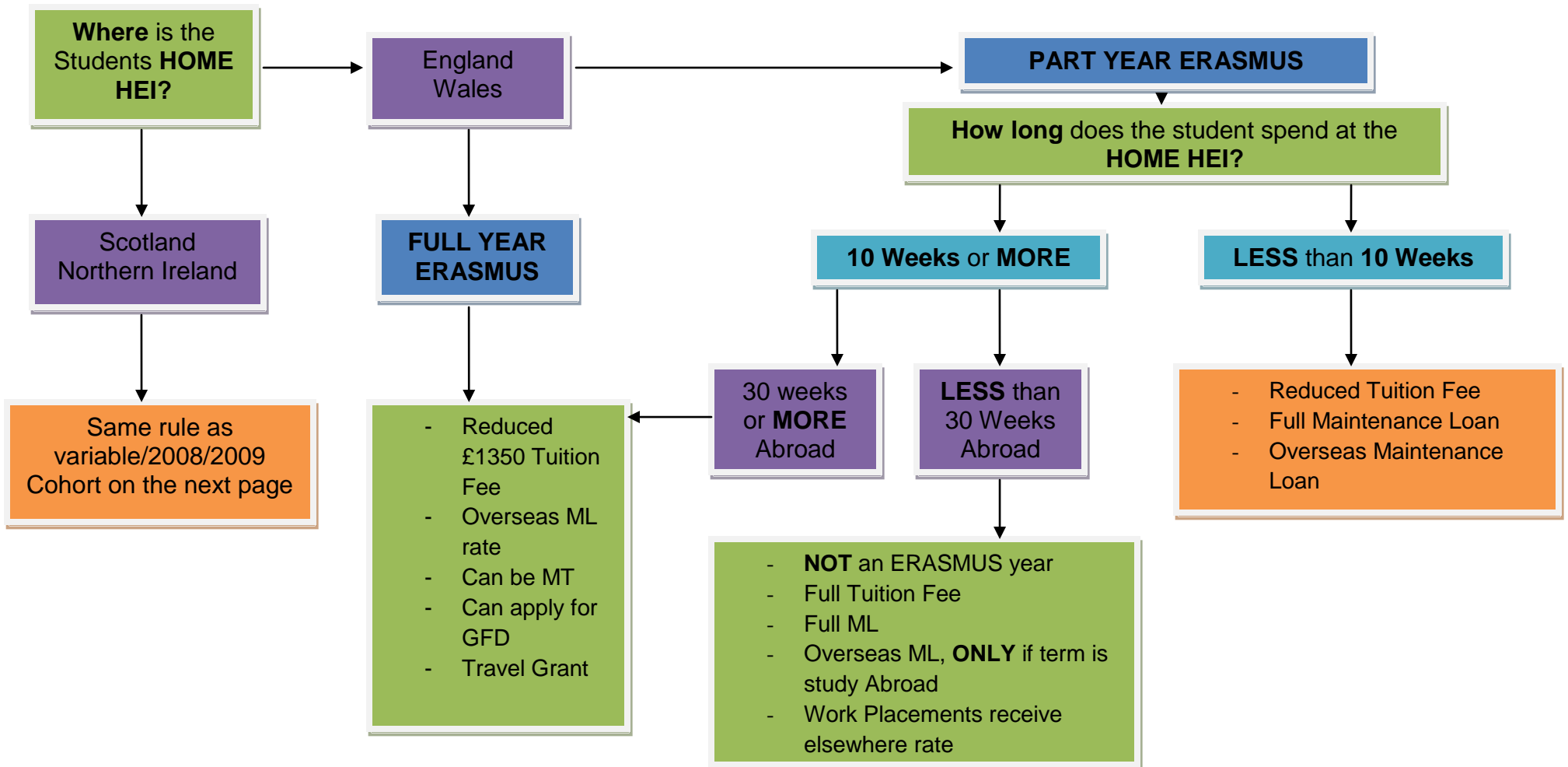
Funding for these students differs from funding awarded to part year ERASMUS students who spend the other part of the academic year (when not on ERASMUS at their home HEI). The [ERASMUS flowchart](#) gives details of the funding to award in these circumstances. Also refer to the [reduced fee table](#) for details of fees.



# ERASMUS 2012 Cohort Table

Funding available for students in 2015/16 AY studying Full or Part Year ERASMUS Study

2012 Cohort from 2014/15 onwards



# ERASMUS Variable/2008/2009 Cohort Table

Funding available for students in 2015/16 AY studying Full or Part Year ERASMUS Study

Variable/2008/2009 Cohort

